



imageRUNNER ADVANCE DX 6980i

CONNECT SECURELY, TRANSFORM DIGITALLY

INNOVATIVE SCAN TECHNOLOGY AND SMART SOFTWARE WORK HAND-IN-HAND

The future of business is digital. Canon imageRUNNER ADVANCE DX is a new generation of smart multifunction devices, designed to support and accelerate every step of your digital transformation. Built with Canon's imageRUNNER ADVANCE DNA, state-of-the-art technology and software work hand-in-hand to digitise, automate and optimise content-centric workflows.

Canon's imageRUNNER ADVANCE DX 6980i offers a smart and secure A3 mono multifunction device enabling dynamic, digitised workflows for fast, high-quality, document production without compromising on security. New scanning technology ensures high-speed and pinpoint accuracy, while uniFLOW Online Express – which comes as standard – delivers cloud connectivity and basic print management.



**CLOUD
CONNECTIVITY**



SECURITY Trellix



SERVICEABILITY



PRODUCTIVITY



SUSTAINABILITY



Canon Europe Ltd.
BLI 2022-2024 Most Reliable A3 Brand

Canon

imageRUNNER ADVANCE DX 6980i

☁️ CLOUD CONNECTIVITY

- Cloud-based software-as-standard uniFLOW Online Express (uFOE) offers a single integrated solution to increase device security and simplify print management
- Securely scan and print documents from anywhere, with enhanced cloud connectivity
- Re-usable print formats allow easy access to documents in the cloud
- Canon's MEAP platform optimises processes by integrating with document capture and output management solutions such as uniFLOW Online*
- Device offers native applications such as AirPrint, Mopria, Universal Print by Microsoft and Canon PRINT Business App

🔒 SECURITY

- Verify System at Start-up supporting Platform Firmware Resiliency (NIST SP800-193) and Automatic Recovery, SIEM support and McAfee Embedded Control analyse the device in real-time to detect and prevent external attacks
- TPM 2.0 (Trusted Platform Module) comes as standard and securely stores encryption keys, such as passwords
- Set up device authentication, two-factor authentication and device function restrictions for

both device and cloud-based security measures

- Encrypted SSD storage extends data protection and is more resistant to vibration and shock for increased reliability
- Upgrade to uniFLOW Online* for enhanced secure printing, mobile printing, and guest printing from any device
- Data privacy across your network is ensured with IPsec, port filtering and TLS 1.3 & WPA3 support
- Step-up security further with easy-to-programme Security Navigator or let Canon's experts create best solution for your business environment

📈 PRODUCTIVITY

- Print and scan up to 80 ppm and 270 ipm
- Automatically file documents with cloud-based Filing Assist from uniFLOW Online*
- Alleviate concerns for physical device operation, without compromising user experience, by applying optional antimicrobial film to all common touch points
- Efficiently digitise documents with one-touch workflows and shortcut buttons on the Home screen
- Enable flexible hybrid working and minimise device interaction with continuous user experience through the Canon PRINT Business app
- Boost productivity with stapling of up to 50 sheets with the optional Instant Stapler accessory – small enough to fit on top of devices or desks, anywhere in the office, home or co-working space

🌱 SUSTAINABILITY

- Edit print settings at device-level for accurate scan output
- Reduced operation noise from soundproofing of the MFP exterior ensures quiet operation and prevents distraction in workspaces
- Eco Recovery mode decreases power consumption to save energy and lower running costs
- High-quality error-free scanning, including digital de-skewing and advanced stain resistant glass, cuts down wastage
- Eco stapling reduces staple costs and contributes to environmentally friendly document production and management
- Edit print settings at device-level to further reduce paper and toner wastage

✂️ SERVICEABILITY

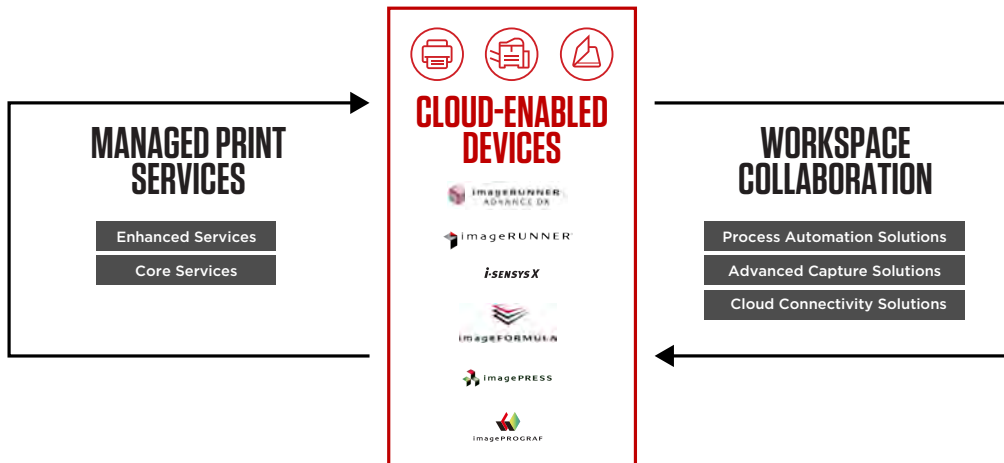
- Save costs and increase device uptime with innovative enhancements to frequently replaced hardware components as part of our evolving imageRUNNER ADVANCE DX portfolio
- Reduce technician visits with quick, safe, and accurate user replacement of consumable parts
- Long-life parts reduce the frequency of replacement while screw-free fastenings allow parts to be replaced faster and more efficiently

*uniFLOW Online is available as a Device Based Cloud Subscription for Document Output and Capture Management. Based on business needs, users can upgrade to uniFLOW Online to unlock a range of advanced benefits, including: Increased security with user authentication methods. Personalised workflows to enhance productivity. Reduced wastage by releasing jobs at the device. An intuitive cloud dashboard to leverage real-time data. Greater control over access and usage to reduce print costs.

QUICK FACTS

- **Format:** Mono A3
- **Paper Supply Capacity (Max):** 7,700 sheets
- **Warm-up time:** 4 seconds or less
- **Finishing Capabilities:** Collate, Group, Offset, Staple, Saddle Stitch, Hole Punch, Eco Staple, Staple On Demand, Document Insertion, Z-fold, C-fold
- **Supported File Types:** PDF, EPS, TIFF, JPEG, and XPS
- **Print speed:** 80 ppm (A4)
- **Scan speed:** 270 ipm (A4)
- **Print Languages:** UFR II, PCL6, Adobe® PostScript 3™ (optional)
- **Print Resolution:** 1,200 x 1,200
- Enhanced cloud connectivity enables collaborative document access from anywhere with re-usable formats for easy handling
- Accurate, high-speed scanning is facilitated by Canon's innovative new paper feeding mechanism and stain-resistant glass
- Efficient workflow automation means documents are intuitively scanned, searched and stored with applications including OneDrive, SharePoint, Concur and Dropbox
- Verify System at Start-up, McAfee Embedded Control software, alongside other security features, offers complete peace of mind and 360° protection covering document, network and device
- Simplified print management is enabled with centrally-managed print settings and device usage analysis, provided through native uniFLOW Online Express (uFOE)
- Quiet ADF operation, low energy consumption and reduced emissions lower environmental impacts

TAILORED SOLUTIONS TO MEET EVERY CHALLENGE



Canon's Digital Transformation Services (DTS), bring together our leading hardware and software into an integrated technology ecosystem, designed to support your transformation journey. This offering combines Managed Print Services and Workspace Collaboration solutions, to help you gain transparency and control over the entire document lifecycle.



Canon Ireland
3006 Lake Drive
Citywest, Saggart
Co. Dublin, Ireland
Telephone No: 01 2052400
Facsimile No: 01 2052525
canon.ie

Canon (UK) Ltd
The Bower
4 Roundwood Avenue
Stockley Park
Uxbridge
UB11 1AF

Canon Inc.
canon.com
Canon Europe
canon-europe.com
English edition
© Canon Europa N.V., 2023

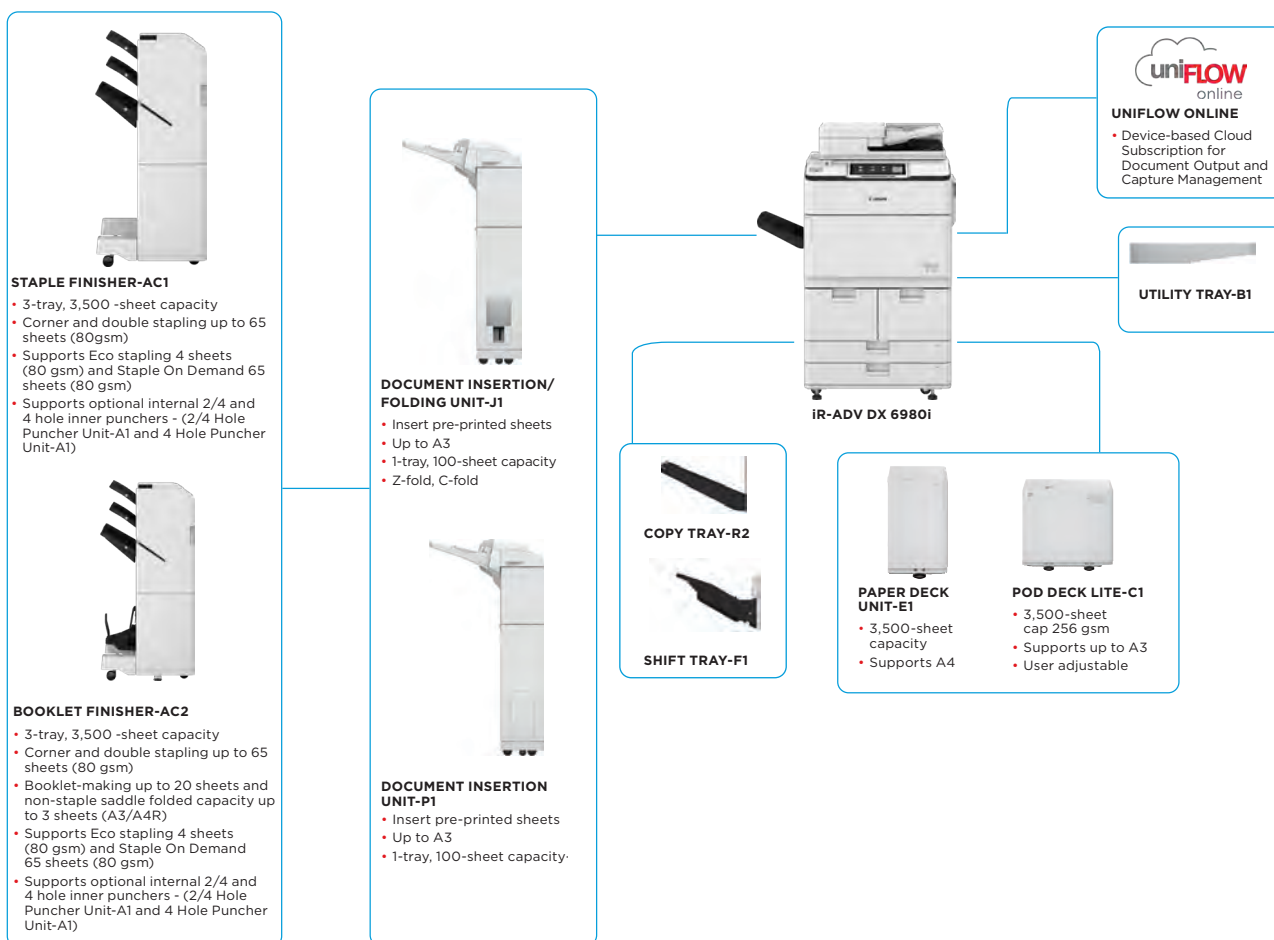
imageRUNNER ADVANCE DX 6980i

IMPROVE BUSINESS EFFICIENCY WITH MONO A3 MULTIFUNCTION DEVICE THAT STREAMLINES WORKFLOWS WITH AUTOMATION AND CLOUD CONNECTIVITY



Canon Europe Ltd.
BLI 2023-2024 Most Reliable A3 Brand

MAIN CONFIGURATION OPTIONS



This flat configuration is for illustration purpose only. For a complete list of options and the exact compatibility relationships, please refer to the online [product configurator](#).

The Unified Firmware Platform (UFP) ensures that the latest feature upgrades and protection are available, for an enhanced user experience across the entire iR ADVANCE DX portfolio.

Canon

TECHNICAL SPECIFICATIONS

imageRUNNER ADVANCE DX 6980i

MAIN UNIT

Machine type	A3 Monochrome Laser Multifunctional
Core functions	Print, Copy*, Scan*, Send*, Store and Optional Fax*
Processor	1.8GHz Dual Core Processor
Control Panel	Standard: 10.1" TFT LCD WSVGA Colour Touch panel
Memory	Standard: 4.0GB RAM
Storage	Standard: (SSD) 256 GB Optional: (SSD) 1TB
Mirroring Hard Disk Drive	Optional
Interface Connection	Network Standard: 1000Base-T/100Base-TX/10Base-T, Optional: Wireless LAN (IEEE 802.11 b/g/n) Others Standard: USB 2.0 (Host) x1, USB 3.0 (Host) x1, USB 2.0 (Device) x1; Optional: Serial Interface, Copy Control Interface
Paper Supply Capacity (A4, 80gsm)	Standard: 4,200 sheets 100-sheet Multi-purpose tray x1 550-sheet cassette x 2 1,500-sheet Paper Deck x 2 Maximum: 7,700 sheets (with Paper Deck Unit-E1 or POD Deck Lite-C1)
Paper output capacity (A4, 80gsm)	250 Sheets (with Copy Tray-R2) Maximum: 3,500 Sheets (with Staple Finisher-AC1 or Booklet Finisher-AC1)
Finishing capabilities	With options: Collate, Group, Offset, Staple, Saddle Stitch, Hole Punch, Eco Staple, Staple On Demand, Document Insertion, Z-fold, C-fold
Supported media types	Multi-purpose tray: Thin, Plain, Recycled, Color, Heavy, Bond, Transparency, Label, Pre-punched, Letterhead, Tab, Tracing Paper Decks (Right/Left): Thin, Plain, Recycled, Color, Heavy, Bond, Pre-punched, Letterhead Paper Cassettes (Upper/Lower): Thin, Plain, Recycled, Color, Heavy, Bond, Pre-punched, Letterhead, Tab *Tab Feeding Attachment-B1 is required.
Supported media sizes	Multi-purpose tray: Standard size: A3, A4, A4R, A5*, A5R, A6R*, B4, B5, B5R Custom size: 100.0 x 148.0 mm to 297.0 x 487.7 mm Free size: 100.0 x 148.0 mm to 297.0 x 487.7 mm *1 Supported media weights: more than 64 gsm *2 Supported media weights: more than 91 gsm Paper Decks (Right/Left): Standard size: A4, B5 Paper Cassettes (Upper/ Lower): Standard size: A3, A4, A4R, A5R, B4, B5, B5R Custom size: 139.7 x 182.0 mm to 297 x 487.7 mm
Supported media weights	Multi-purpose tray: 52 to 256 gsm Paper Deck(Right/Left): 52 to 220 gsm Paper Cassette(Upper/Lower): 52 to 220 gsm Duplex: 52 to 220 gsm
Warm-up Time	Quick Start-up Mode: 4 Seconds or less* *Time from device power on to when the copy icon appears and is enabled to operate on the touch panel display From Sleep Mode: 30 Seconds or Less From Power On: 30 seconds or less* *Time from device power-on, until copy ready(not print reservation)
Dimensions (W x D x H)	670 x 770 x 1,185 mm *With optional Upright Control Panel: 1,170 x 770 x 1,252 mm
Installation Space(W x D)	Basic: 1,533 x 1,353 mm (with Multi-purpose tray/ upper-right cover open + Front cover open + Copy Tray) Fully configured: 2,436 x 1,353 mm (with POD Deck Lite-C1 + Document Insertion/Folding Unit-J1 + Booklet Finisher-AC1/Staple Finisher-AC1 + Main unit Front cover open)
Weight	Approx. 219 kg ¹ , Approx. 223 kg ² ¹ Including ADF, Flat Touch Panel and the toner bottle. ² Including ADF, optional Upright touch panel and the toner bottle.

PRINT SPECIFICATIONS

Print Speed	Up to 80 ppm (A4), up to 40 ppm (A3), up to 58 ppm (A4R), up to 35ppm (A5R)
Print Resolution (dpi)	1,200 x 1,200
Page description languages	Standard: UFRIL, PCL6, Optional: Adobe®PostScript®3™
Direct Print	Supported file types: PDF, EPS, TIFF/JPEG, and XPS
Printing from mobile and cloud	AirPrint, Mopria and Universal Print by Microsoft, Canon PRINT Business, uniFLOW Online (optional) A range of software and MEAP-based solutions are available to provide printing from mobile devices or internet-connected devices and cloud-based services depending on your requirements. Please contact your sales representative for further information

Fonts

PS fonts: 136 Roman
PCL fonts: 93 Roman, 10 Bitmap fonts, 2 OCR fonts, Andale Mono WT J/K/S/T¹ (Japanese, Korean, Simplified and Traditional Chinese), Barcode fonts²

¹ Optional PCL International Font Set-A1 is required.
² Optional Barcode Printing Kit-D1 is required.

Print Features

Secured Print, Secure Watermark, Header/Footer, Page Layout, Two-sided Printing, Mixed Paper Sizes/Orientations, Front/Back Covers, Toner Reduction, Poster Printing, Forced hold printing, Print Date, Scheduled Printing, Printing Using a Virtual Printer

Operating System

UFRIL: Windows[®]10/11/Server 2012/Server 2012 R2/Server 2016/Server 2019/Server 2022, MAC OS X (10.13 or later)
PCL: Windows[®]10/11/Server 2012/Server 2012 R2/Server 2016/Server 2019/Server 2022, MAC OS X (10.13 or later)
PS: Windows[®]10/11/Server 2012/Server 2012 R2/Server 2016/Server 2019/Server 2022, MAC OS X (10.13 or later)
PPD: Windows[®]10/11, MAC OS X (10.13 or later)

COPY SPECIFICATIONS

Copy Speed	Up to 80 ppm (A4), up to 40 ppm (A3), upto 58 ppm (A4R), upto 35 ppm (A5R)
First-Copy-Out Time (A4)	Approx. 3.1 seconds or less
Copy resolution (dpi)	600x 600
Multiple Copies	Up to 9,999 copies
Copy Density	Automatic or Manual (9 Levels)
Magnification	Variable zoom: 25% to 400% (1% Increments) Preset reduction/enlargement: 25%, 50%, 70%, 100%(1:1), 141%, 200%, 400%
Copy Features	Preset R/E Ratios by Area, Two-Sided, Density Adjustment, Original Type Selection, Interrupt Mode, Book to Two Pages, Two-sided Original, Job Build, N on 1, Add Cover, Insert Sheets, Different Size Originals, Page Numbering, Copy Set Numbering, Sharpness, Erase Frame, Secure Watermark, Print Date, Gutter, Print & Check, Negative/Positive, Repeat Images, Merge Job Blocks, Mirror Image, Store in Mail Box, Superimpose Image, Copy ID Card, Skip Blank Pages, Free Size Original, Reserved copy, Copy Sample

SCAN SPECIFICATIONS

Type	Single-pass Duplexing Automatic Document Feeder [2-sided to 2-sided (Automatic)] *Detect Feeder Multi Sheet Feed is supported. up to 200 Sheets
Document Feeder Paper Capacity (80 gsm)	Platen: Sheet, Book, and 3-Dimensional Objects Document Feeder media weight: 1-sided scanning: 38 to 220 gsm 2-sided scanning: 38 to 220 gsm *An acceptable weights of A6R or smaller is 50 to 220gsm.
Supported media sizes	Platen max. scanning size: up to 297.0 x 431.8 mm Document Feeder media size: A3, A4, A4R, A5, A5R, A6R, B4, B5, B5R, B6R, Custom size: 70.0 x 139.7 mm to 304.8 x 431.8 mm
Scan Speed (ipm, BW/CL, A4)	1-sided Scanning: 135/135 (300 x 300 dpi, send), 80/80 (600 x 600 dpi, copy) 2-sided Scanning: 270/270 (300 x 300 dpi, send), 160/90 (600 x 600 dpi, copy)
Scan Resolution (dpi)	Scan for Copy: 600 x 600 Scan for Send: (Push) 600 x 600 (SMB/FTP/WebDAV/IFAX), (Pull) 600 x 600 Scan for Fax: 600 x 600
Pull Scan Specifications	Colour Network ScanGear2. For both TWAIN and WIA Supported OS : Windows [®] 10/11/Server 2012/Server 2012 R2/Server 2016/Server 2019/Server 2022
Scan Method	Push Scan, Pull Scan, Scan to Box, Scan to Advanced Space, Scan to Network, Scan to USB Memory Key, Scan to Mobile device, Scan to cloud (uniFLOW - Online)

SEND SPECIFICATIONS

Destination	Standard: E-mail/Internet FAX (SMTP), SMB3.1.1, FTP, WebDAV, Mail Box Optional: Super G3 FAX, IP Fax
Address Book	LDAP (2000)/Local (1600)/Speed dial (200)
Send resolution (dpi)	Push: up to 600 x 600 Pull: up to 600 x 600
Communication protocol	File: FTP(TCP/IP), SMB3.1.1 (TCP/IP), WebDAV E-mail/I-Fax: SMTP, POP3
File Format	Standard: TIFF, JPEG, PDF(Compact, Searchable, Apply policy, Optimize for Web, PDF/A-1b, Trace & Smooth, Encrypted, Device Signature, User Signature), XPS(Compact, Searchable, Device Signature, User Signature), Office Open XML (PowerPoint, Word)



TECHNICAL SPECIFICATIONS

imageRUNNER ADVANCE DX 6980i

Universal Send Features	Original Type Selection, Two-sided Original, Book to Two Pages, Different-size Originals, Density Adjustment, Sharpness, Copy Ratio, Erase Frame, Job Build, Delayed Send, Preview, Job Done Notice, File Name, Subject/Message, Reply-to, E-mail Priority, TX Report, Original Content Orientation, Skip Blank Pages	Power consumption	Maximum: Approx. 2,400 W Copying (with DADF continuous scan): Approx. 1,290 W ¹ Standby: Approx. 256 W ¹ Sleep mode: Approx. 0.9 W ²
FAX SPECIFICATIONS		Typical Electricity Consumption (TEC)*	1.56 kWh *As per USA Energy Star 3.0
Maximum Number of Connection Lines	2	Noise levels	Sound Power Level (LWA,m) Active (1-sided): 72 dB,Kv 3 dB *Reference value: measured only one unit with ISO7779, described with ISO9296 (2017)
Modem Speed	Super G3: 33.6 kbps G3: 14.4 kbps		Sound Pressure (LpAm) Bystander's position: Active (1-sided): 57 dB* Standby: 33 dB* *Reference value: measured only one unit with ISO7779, described with ISO9296 (2017)
Compression Method	MH, MR, MMR, JBIG	CONSUMABLES	
Resolution (dpi)	400x400 (Ultra Fine), 200x400 (Super Fine), 200x200 (Fine), 200x100 (Normal)	Toner Cartridge	C-EXV 36 Black Toner
Sending/Receiving Size	Sending: A3, A4, A4R, A5 ¹ , A5R ¹ , B4, B5 ² , B5R ¹ Receiving: A3, A4, A4R, A5R, B4, B5, B5R ¹ Sent as A4 ² Sent as B4 short	Toner (Estimated Yield @6% Coverage)	56,000 pages
FAX memory	Up to 30,000 pages (2,000 jobs)	SOFTWARE AND PRINTER MANAGEMENT	
Speed dials	Max. 200	Tracking and reporting	For detailed information please visit our website https://www.canon-europe.com/business/ Universal Login Manager (ULM) uniFLOW Online Express* *For more information, please refer to uniFLOW Online Express/uniFLOW Online Technical Datasheets
Group dials/destinations	Max. 199 dials	Remote management tools	iW Management Console eMaintenance Content Delivery System
Sequential broadcast	Max. 256 addresses	Scanning software	Network ScanGear
Memory backup	Yes	Optimisation tools	Canon Driver Configuration Tool NetSpot Device Installer
Fax Features	Sender's Name (TTI), Selecting the Telephone Line (when sending fax), Direct Send, Delayed Send, Preview, Job Done Notice, TX Report, Interrupt Transmission, Sequential Broadcasting, Password/Subaddress Sending, Confidential Mailbox, 2 on 1 Log	Platform	MEAP (MultiFunction Embedded Application Platform)
		Document Administration	Kofax Power PDF (Optional)
STORE SPECIFICATIONS		PAPER SUPPLY OPTIONS	
Mail Box (Number supported)	100 User Inboxes, 1 Memory RX Inbox, 50 Confidential Fax Inboxes Maximum 30,000 Pages (2,000 jobs) Stored	Paper Deck Unit-E1	Paper Capacity: 3,500 sheets (80 gsm) Paper Type: Thin, Plain, Recycled, Color, Heavy, Bond, Pre-punched, Letterhead Paper Size: A4, B5 Paper Weight: 52 to 256 gsm Power Source: from the Main Unit Dimensions (W x D x H): 340 x 630 x 572 mm (attached to the main unit) Weight: Approx. 34 kg
Advanced Space	Communication Protocol: SMB or WebDAV SUPPORTED CLIENT PC: WINDOWS* 10/11 CONCURRENT CONNECTIONS (MAX.): SMB:64, WEBDAV:3	POD Deck Lite-C1	Paper Capacity: 3,500 sheets (80 gsm) Paper Type: Thin, Plain, Recycled, Color, Heavy, Tracing, Bond, Transparency, Label, Pre-punched, Letterhead, Tab Paper Size: A3, A4, A4R, B4, A5R, B5, B5R, Custom size: 139.7 x 182.0 mm to 297.0 to 487.7 mm Paper Weight: 52 to 256 gsm Power Source: 220-240V, 50/60Hz, 1.2A Dimensions (W x D x H): 633 x 686 x 574 mm (attached to the main unit) Weight: Approx. 68 kg
Advanced Space available disc space	Standard:16 GB (With option: max. 480GB.)	OUTPUT OPTIONS*	*Paper capacity may vary with different of paper type/size.
Advanced Space Features	Authentication for Advanced Space Log-in, Sort Function, Printing a PDF File with a Password, imageWARE Secure Audit Manager Support, Search, File Preview, Authentication Management, Open to public, URI TX, Backup/Restore	Copy Tray-R2	Provides a simple tray for basic output needs. Capacity: 250/100 sheets (1-sided/2-sided, 80 gsm) Dimensions (W x D x H): 420 x 382 x 175 mm
SECURITY SPECIFICATIONS		Staple Finisher-AC1	Tray Capacity (with 80gsm paper): Upper Tray: A4, A5, A5R, A6R, B5: 250 sheets A3, A4R, B4, B5R: 125 sheets Mid Tray: Same as upper tray Lower Tray: A4, A5, A5R, B5: 3,000 sheets A3, A4R, B4, B5R: 1,500 sheets A6R: 250 sheets Paper Weight: 52 to 256 gsm Staple Position: Corner, Double Staple Capacity: A4, B5: 65 sheets (52 to 90 gsm) A3, A4R, B4: 40 sheets (52 to 90 gsm) Eco Staple: A3, A4 5 sheets (52 to 64 gsm) 4 sheets (65 to 81.4 gsm) 3 sheets (82 to 105 gsm) Staple On Demand: 65 sheets Power supply: From the main unit Dimensions (W x D x H): 656 x 623 x 1,195 mm (when the extension tray and rotary tray are extended) Weight: Approx. 36 kg
Authentication and Access Control (activation required)	User Authentication (Picture Login, Picture and PIN Login, Card Login, Username and Password Login, Function Level Login, Mobile Login), Department ID Authentication (Department ID and PIN Login, Function Level Login), uniFLOW Online Express (PIN Login, Picture Login, Picture and PIN Login, Card Login, Card and PIN Login, Username and Password Login, Department ID and PIN Login, Function Level Login), Access Management System (Access Control)	Booklet Finisher-AC1	(Includes the above Staple Finisher-AC1 basic staple specifications.) Saddle Stitch paper size: A3, A4R, B4, Custom Size (195.0 x 270.0 mm to 297.0 x 431.8 mm) Saddle Stitch Staple Capacity: 20 sheets x 10 sets (52 to 81.4 gsm) (including 1 cover sheet up to 256 gsm) Non Staple Folded Bunch Capacity: 3 sheets (52 to 105 gsm) Power supply: From the main unit Dimensions (W x D x H): 656 x 623 x 1,195 mm (when the extension tray and rotary tray are extended) Weight: Approx. 60 kg
Document Security	Print Security (Secure Print, Encrypted Secure Print, Forced Hold Printing, uniFLOW Secure Print*), Receive Data Security (Confidential Fax Inbox Forwarding Received Documents Automatically), Scan Security (Encrypted PDF, Device Signature PDF/XPS, User Signature PDF/XPS, Adobe LiveCycle® Rights Management ES2.5 Integration), BOX Security (Mail Box Password Protected, Advanced Space Access Control), Send Data Security (Setting for requesting password input per transmission, Restricted E-mail/File send functions, Confirming FAX number, Allow/Restrict Fax Driver Transmissions, Allow/Restrict Sending from History, S/MIME Support), Document Tracking (Secure Watermark) ¹ Requires uniFLOW Online / uniFLOW		
Network Security	TLS 1.3, IPsec, IEEE802.1X authentication, SNMP V3.0, Firewall Functionality (IP/MAC Address Filtering), WPA3 support (Wi-Fi), Dual Network Support (Wired LAN/Wireless LAN, Wired LAN/Wired LAN), Disabling Unused Functions (Enabling/Disabling Protocols/Applications, Enabling/Disabling Remote UI, Enabling/Disabling USB Interface), Communication Line Separation (G3 FAX, USB Port, Advanced Space, Scan and Send -Virus Concerns for E-mail Reception)		
Device Security	Protecting SSD Data [SSD Data Encryption (FIPS 140-2/140-3*), SSD Lock], Standard SSD Initialize, Trusted Platform Module (TPM2.0), Job Log Conceal Function, Protecting MFD Software Integrity, Checking MFD Software Integrity & Platform Firmware Resiliency (NIST SP800-193) with Automatic System Recovery (Verify System at Startup, Runtime Intrusion Detection), Comply IEEE2600.2 (Common Criteria Certification) *validation pending		
Device Management and Auditing	Administrator Password, Digital Certificate And Key Management, Audit Log, Remote Management Two-Factor Authentication, Cooperating with External Security Audit System (Security Information and Event Management), Image Data Logging, Security Policy Setting		
ENVIRONMENTAL SPECIFICATIONS			
Operating Environment	Temperature: 10 to 30°C Humidity: 20 to 80 % RH (Relative Humidity)		
Power Source	220-240V, 50/60Hz, 10A		



TECHNICAL SPECIFICATIONS

imageRUNNER ADVANCE DX 6980i

2/4 HOLE PUNCHER UNIT-A1	<p>(Requires either the Staple Finisher-AC1 or Booklet Finisher-AC1) Two or Four Holes Acceptable Punch Paper Weight: 52 to 256 gsm Acceptable Punch Paper Size: Two holes A3, A4, A4R, A5, B4, B5, B5R Four holes A3, A4 Power Source: From the finisher</p>	HARDWARE ACCESSORIES	<p>Card Readers</p> <p>Various card readers available e.g. MiCard Plus. Please contact local Canon Office for more details. Copy Card Reader-F1 Copy Card Reader Attachment-A5</p> <p>Others</p> <p>Utility Tray-B1 Tab Feeding Attachment Kit-B1 Shift Tray-F1 Numeric Keypad-A2 Finisher Jogger Kit-A1</p>
4 Hole Puncher Unit-A1	<p>(Requires either the Staple Finisher-AC1 or Booklet Finisher-AC1) Four Holes Acceptable Punch Paper Weight: 52 to 256 gsm Acceptable Punch Paper Size: Four holes A3, A4, A4R, A5, B4, B5, B5R Power Source: From the finisher</p>	SECURITY OPTIONS	<p>Data security</p> <p>250GB SSD-A1 (used with Memory Mirroring Kit-A1) 1TB SSD-A1 Memory Mirroring Kit-A1</p>
Document Insertion Unit-P1	<p>(Requires either the Staple Finisher-AC1 or Booklet Finisher-AC1) Number of trays: 1 Tray Capacity: 100 Sheets (with 80 gsm paper) Acceptable Paper Type: Thin, Plain, Recycled, Color, Heavy, Coated, Bond, Letterhead, Tab Acceptable Paper Sizes: A3, A4, A4R, B4, B5, B5R Acceptable Paper Weight: 60 to 256 gsm Power Source: 100-240V, 50/60Hz, 1.0A Dimensions (W x D x H): 247x 679 x 1,242 mm (attached to the device: width excluding document tray) Weight: Approx. 40 kg</p>	SYSTEM AND CONTROLLER OPTIONS	<p>Print Accessories</p> <p>PCL International Font Set-A1 PS Printer Kit-BC1</p> <p>Barcode Printing</p> <p>Barcode Printing Kit-D1</p> <p>System Accessories</p> <p>Serial Interface Kit-K3 Copy Control Interface Kit-A1 Wireless LAN Board-G1</p>
Document Insertion / Folding Unit-J1	<p>(Requires either the Staple Finisher-AC1 or Booklet Finisher-AC1) Number of trays: 1 Supported Folding Type: Z-Fold, C-Fold Acceptable Paper Type: Insertion Unit: Thin, Plain, Recycled, Color, Heavy, Coated, Bond, Letterhead, Tab Z-Fold/C-Fold: Thin, Plain, Recycled, Color Acceptable Paper Sizes: Insertion Unit: A3, A4, A4R, B4, B5, B5R Z-Fold: A3, A4R, B4 C-Fold: A4R Acceptable Paper Weight: Insertion Unit: 60 to 256 gsm Z-Fold/C-Fold: 60 to 105 gsm Output Capacity (with 80 gsm paper): Insertion: 100 Sheets Z-Fold*: A3, B4: 30 sheets (80 gsm) A4R: 10 sheets C-fold: A4R: 40 sheets (80 gsm) *Z-Fold output to the Staple Finisher-AC1 or Booklet Finisher-AC1 Power Source: 100-240V, 50/60Hz, 1.0A Dimensions (W x D x H): 247 x 679 x 1,242 mm (attached to the device: width excluding document tray) Weight: Approx. 76 kg</p>	OTHER OPTIONS	<p>Accessibility Accessories</p> <p>ADF Access Handle-A1 Voice Guidance Kit-G1 Voice Operation Kit-D1</p> <p>Staple Cartridge</p> <p>Staple Cartridge-X1 Staple Cartridge-Y1</p>
		Fax Accessories	<p>Super G3 FAX Board-AX1 Remote Fax Kit-A1 IP FAX Expansion Kit-B1</p>

Software & Solutions



Certifications and compatibility



Canon Ireland
3006 Lake Drive
Citywest, Saggart
Co. Dublin, Ireland
Telephone No: 01 2052400
Facsimile No: 01 2052525
canon.ie

Canon (UK) Ltd
The Bower
4 Roundwood Avenue
Stockley Park
Uxbridge
UB11 1AF

Canon Inc.
canon.com
Canon Europe
canon-europe.com
English edition
© Canon Europa N.V., 2023

