



imageRUNNER ADVANCE DX C3900 Series

CONNECT SECURELY, TRANSFORM DIGITALLY

OPTIMUM PERFORMANCE AND UNRIVALLED USER EXPERIENCE FROM INNOVATIVE TECHNOLOGIES

The future of business is digital. Canon imageRUNNER ADVANCE DX is a new generation of smart multifunction devices, designed to support and accelerate every step of your digital transformation. Built with Canon's imageRUNNER ADVANCE DNA, state-of-the-art technology and software work hand-in-hand to digitise, automate and optimise content-centric workflows. As always, we're continually evolving our technology to ensure you feel safe and confident when using Canon devices.

Canon's imageRUNNER ADVANCE DX C3900 Series offers enhanced security and effortless serviceability, with smart document workflows and vibrant image quality. Ideal for small to medium-sized offices and large companies looking for a versatile and efficient MFP device, these quiet and sustainable devices seamlessly integrate into hybrid workspaces. uniFLOW Online Express comes as standard, delivering centralised device management and secure collaboration in the cloud.



**CLOUD
CONNECTIVITY**



SECURITY



PRODUCTIVITY



SUSTAINABILITY



SERVICEABILITY

Canon

imageRUNNER ADVANCE DX C3900 Series

CLOUD CONNECTIVITY

- Cloud-based software-as-a-standard uniFLOW Online Express (uFOE) offers a single integrated solution to increase device security and simplify print management
- Securely scan and print documents from anywhere, with enhanced cloud connectivity
- Re-usable print formats allow easy access to documents in the cloud
- Canon's MEAP platform optimises processes by integrating with document capture and output management solutions such as uniFLOW Online
- Device offers native applications such as AirPrint, Mopria, Universal Print by Microsoft and Canon PRINT Business app

SECURITY

- Verify System at Start-up supporting Platform Firmware Resiliency (NIST SP800-193) and Automatic Recovery, SIEM support and McAfee Embedded Control analyse the device in real-time to detect and prevent external attacks
- TPM 2.0 (Trusted Platform Module) comes as standard and securely stores encryption keys, such as passwords
- Set up device authentication, two-factor authentication and device function restrictions for both device and cloud-based security measures

- Encrypted SSD storage extends data protection and is more resistant to vibration and shock for increased reliability
- Upgrade to uniFLOW Online* for enhanced secure printing, mobile printing, and guest printing from any device
- Data privacy across your network is ensured with IPsec, port filtering and TLS 1.3 & WPA3 support
- Step-up security further with easy-to-programme Security Navigator or let Canon's experts create best solution for your business environment

PRODUCTIVITY

- Print and scan up to 35 ppm and 270 ipm
- Automatically file documents with cloud-based Filing Assist from uniFLOW Online*
- Alleviate concerns for physical device operation, without compromising user experience, by applying** optional antimicrobial film to all common touch points
- Efficiently digitise documents with one-touch workflows and shortcut buttons on the Home screen
- Enable flexible hybrid working and minimise device interaction with continuous user experience through the Canon PRINT Business app
- Boost productivity with stapling of up to 50 sheets with the optional Instant Stapler accessory – small enough to fit on top of devices or desks, anywhere in the office, home or co-working space

SUSTAINABILITY

- Edit print settings at device-level to reduce paper and toner wastage
- Reduced operation noise from soundproofing of the MFP exterior ensures quiet operation and prevents distraction in co-working spaces
- Eco Recovery mode decreases power consumption to save energy and lower running costs
- High-quality error-free scanning, including digital de-skewing and advanced stain resistant glass cuts down wastage
- Eco stapling reduces staple costs and contributes to environmentally friendly document production and management

SERVICEABILITY

- Save costs and increase device uptime with innovative enhancements to frequently replaced hardware components as part of our evolving imageRUNNER ADVANCE DX portfolio
- Consumable life prediction allows parts to be replaced systematically to reduce service costs
- Users can easily replace consumable parts quickly, accurately and safely to reduce technician visits

*uniFLOW Online is available as a Device Based Cloud Subscription for Document Output and Capture Management. Based on business needs, users can upgrade to uniFLOW Online to unlock a range of advanced benefits, including: Increased security with user authentication methods. Personalised workflows to enhance productivity. Reduced wastage by releasing jobs at the device. An intuitive cloud dashboard to leverage real-time data. Greater control over access and usage to reduce print costs. **it is recommended that the film is applied by a Service engineer.

NOTE - Certain features are only enabled with the combination of imageRUNNER ADVANCE DX and uniFLOW Online

QUICK FACTS



- **Format:** Colour A3
- **Paper Supply Capacity (Max):** 2,300 sheets
- **Warm-up time:** 4 seconds or less (Quick Startup Mode)
- **Finishing Capabilities:** Collate, Group, Offset, Staple, Saddle Stitch, Hole Punch, Eco Staple, Staple On Demand
- **Supported File Types:** PDF, EPS, TIFF/JPEG, and XPS



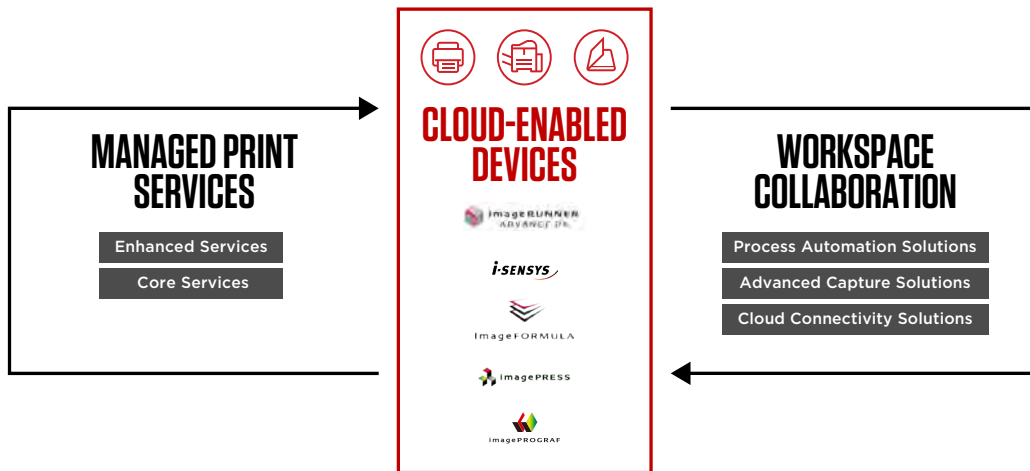
- **Print speed:** 22 - 35 ppm
- **Scan Speed:** 270 ipm (A4)



- **Print Languages:** UFR II, PCL6, Adobe® PostScript®3™
- **Print Resolution:** 1,200 x1,200

- High productivity is enabled with best-in-class print speeds and innovative scan technology.
- Cloud software uniFLOW Online Express helps maintain continuous productivity across hybrid working.
- Work safely and conveniently in hybrid environments with device features such as personalised user timelines and protective antimicrobial film (optional), as well as mobile printing and scanning from applications like Canon PRINT Business app.
- Verify System at Start-up, McAfee Embedded Control, TPM 2.0 and SIEM support protect document, network and device.
- Enhanced finishing capabilities and more paper type support improves production quality.
- Easy maintenance and serviceability ensures device reliability and maximises uptime.
- Efficiently digitise documents with automated workflows connected to applications such as OneDrive, SharePoint, Concur, DropBox and Microsoft Teams (requires uniFLOW Online*).
- Reduce environmental impact and workplace disruption with quieter printing and scanning.

TAILORED SOLUTIONS TO MEET EVERY CHALLENGE



Canon's Digital Transformation Services (DTS), bring together our leading hardware and software into an integrated technology ecosystem, designed to support your transformation journey. This offering combines Managed Print Services and Workspace Collaboration solutions, to help you gain transparency and control over the entire document lifecycle.



Canon Ireland
3006 Lake Drive
Citywest, Saggart
Co. Dublin, Ireland
Telephone No: 01 2052400
Facsimile No: 01 2052525
canon.ie

Canon (UK) Ltd
The Bower
4 Roundwood Avenue
Stockley Park
Uxbridge
UB11 1AF

Canon Inc.
canon.com
Canon Europe
canon-europe.com
English edition
© Canon Europa N.V., 2023

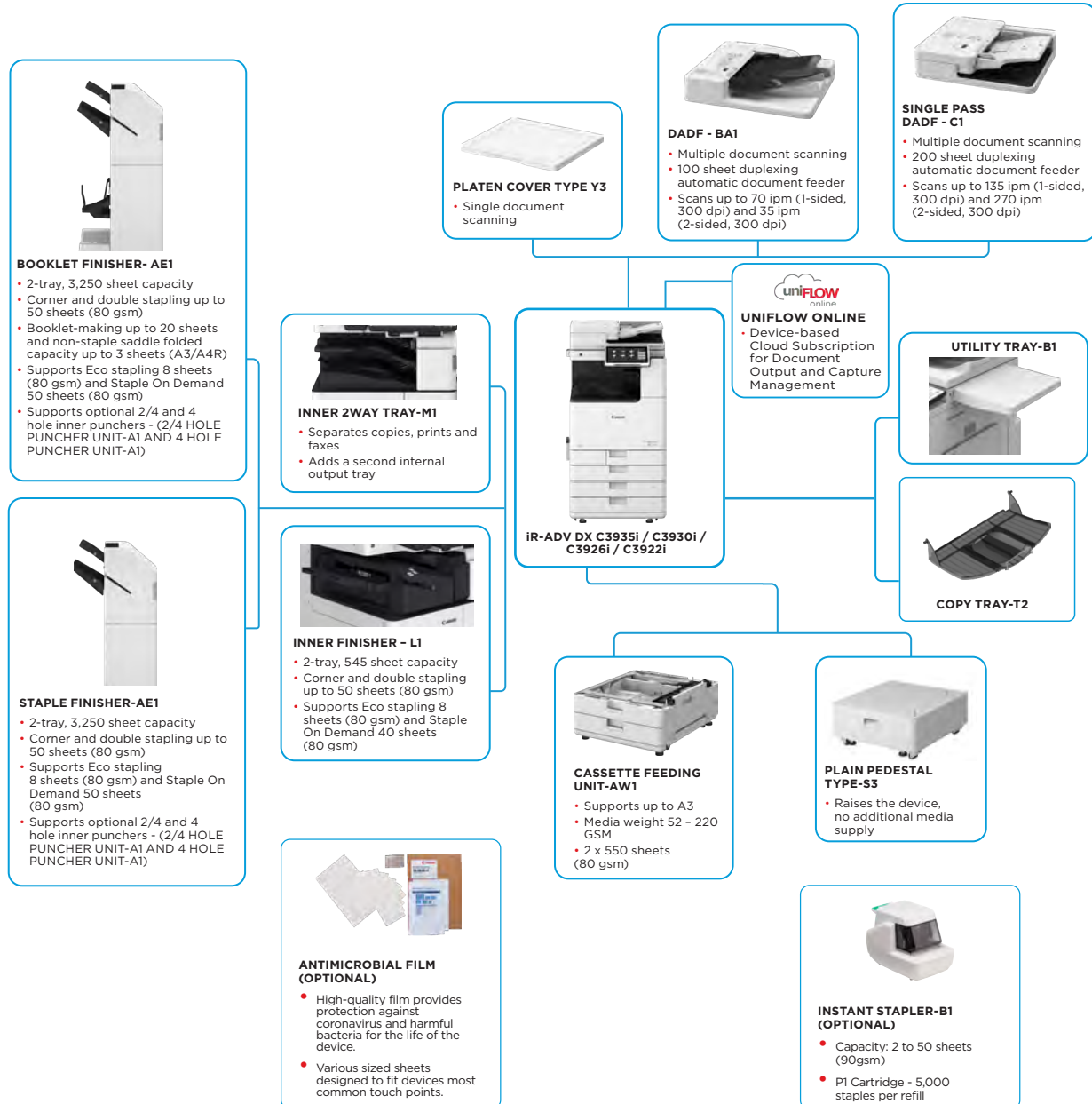
imageRUNNER ADVANCE DX C3900 Series

SMART COLOUR A3 MULTIFUNCTION DEVICES FOR EFFICIENT, HIGH-QUALITY DOCUMENT PROCESSING



Canon Europe Ltd.
EU 2002-2024 Most Reliable A3 Brand

MAIN CONFIGURATION OPTIONS



This flat configuration is for illustration purpose only. For a complete list of options and the exact compatibility relationships, please refer to the online [product configurator](#).

The Unified Firmware Platform (UFP) ensures that the latest feature upgrades and protection are available, for an enhanced user experience across the entire iR ADVANCE DX portfolio.



TECHNICAL SPECIFICATIONS

imageRUNNER ADVANCE DX C3900 Series

MAIN UNIT	A3 Color Laser Multifunctional	Page description languages	Standard: UFR II, PCL6, Adobe® PostScript®3™
Machine type	Print, Copy, Scan, Send, Store and Optional Fax	Direct Print (RUI)	Supported file types: PDF, EPS, TIFF/JPEG, and XPS
Core functions	1.8GHz Dual Core Processor	Printing from mobile and cloud applications	AirPrint, Mopria, Universal Print by Microsoft, Canon PRINT Business app, and uniFLOW Online (optional) A range of software and MEAP-based solutions are available to provide printing from mobile devices or internet-connected devices and cloud-based services depending on your requirements. Please contact your sales representative for further information
Processor	10.1" TFT LCD WSVGA Color Touch panel	OS Standard Printing	Android/Windows® 10/Windows® 11/Chrome OS/ macOS (11.2.2 or later), iOS (15.2 or later), iPadOS
Control Panel	Standard: RAM 3.5GB Main CPU Side: 2GB Image Processing CPU Side: 1GB + 0.5GB (reserved for image processing)	Fonts	PS fonts: 136 Roman PCL fonts: 93 Roman, 10 Bitmap fonts, 2 OCR fonts, Andale Mono WT, J/K/S/T™ (Japanese, Korean, Simplified and Traditional Chinese), Barcode fonts*2 *1: Optional PCL International Font Set-A1 is required. *2: Optional Barcode Printing Kit-D1 is required.
Memory	Standard: (SSD) 256 GB Optional: (SSD) 1TB	Print Features	Secured Print, Secure Watermark, Header/Footer, Page Layout, Two-sided Printing, Mixed Paper Sizes/Orientations, Front/Back Covers, Toner Reduction, Poster Printing, Forced Hold Printing, Print Date, Scheduled Printing, Printing Using a Virtual Printer
Storage	Standard: 1200 sheets 100-sheet Multi-purpose tray 550-sheet Paper cassette x 2 Maximum: 2,300 sheets (with Cassette Feeding Unit-AW1)	Operating System	UFR II: Windows® 10/11/Server 2012/Server 2012 R2/Server 2016/Server 2019/Server 2022, MAC OS X (10.13 or later) PCL: Windows® 10/11/Server 2012/Server 2012 R2/Server 2016/Server 2019/Server 2022, MAC OS X (10.13 or later) PS: Windows® 10/11/Server 2012/Server 2012 R2/Server 2016/Server 2019/Server 2022, MAC OS X (10.13 or later) PPD: Windows® 10/11, MAC OS X (10.13 or later)
Interface Connection	NETWORK Standard: 1000Base-T/100Base-TX/10Base-T, Optional: Wireless LAN (IEEE 802.11 b/g/n) OTHERS Standard: USB 2.0 (Host) x1, USB 3.0 (Host) x1, USB 2.0 (Device) x1; Optional: Serial Interface, Copy Control Interface	COPY SPECIFICATIONS	
Paper Supply Capacity (A4, 80gsm)	Standard: 250 sheets Maximum: 3,450 sheets (with Staple Finisher-AE1 or Booklet Finisher-AE1 and Copy Tray-T2)	Copy Speed (BW and CL)	iR-ADV DX C3935i 1-sided: Up to 35 ppm (A4, A5, A5R, A6R), Up to 17 ppm (A3), Up to 23 ppm (A4R) iR-ADV DX C3930i 1-sided: Up to 30 ppm (A4, A5, A5R, A6R), Up to 15 ppm (A3), Up to 20 ppm (A4R) iR-ADV DX C3926i 1-sided: Up to 26 ppm (A4, A5, A5R, A6R), Up to 15 ppm (A3), Up to 20 ppm (A4R) iR-ADV DX C3922i 1-sided: Up to 22 ppm (A4, A5, A5R, A6R), Up to 15 ppm (A3), Up to 20 ppm (A4R)
Paper output capacity (A4, 80gsm)	Standard: 250 sheets Maximum: 3,450 sheets (with Staple Finisher-AE1 or Booklet Finisher-AE1 and Copy Tray-T2)	First-Copy-Out Time (A4, BW/ CL)	iR-ADV DX C3935i: Approx. 5.5/7.4 seconds or less iR-ADV DX C3930i/C3926i/C3922i: Approx. 6.1/8.4 seconds or less
Finishing capabilities	Collate, Group, Offset, Staple, Saddle Stitch, Hole Punch, Eco Staple, Staple On Demand * Finishing capabilities vary depending on the options connected.	Copy resolution (dpi)	600 x 600
Supported media types	Multi-purpose tray: Thin, Plain, Heavy*, Recycled, Coated*, Color, Tracing, Bond, Transparency, Label, Pre-punched, Letterhead, Envelope * SRA3 is unsupported for Coated (257-300gsm) and Heavy (257-300gsm) paper. Upper Cassette: Thin, Plain, Heavy, Recycled, Color, Bond, Transparency, Pre-punched, Letterhead, Envelope Lower Cassette: Thin, Plain, Heavy, Recycled, Color, Bond, Transparency, Pre-punched, Letterhead, Envelope* * Envelope Feeder Attachment A (standard) is required.	Multiple Copies	Up to 999 copies
Supported media sizes	Multi-purpose tray: Standard size: SRA3, A3, A4, A4R, A5, A5R, A6R, B4, B5, B5R Custom size: 98.4 x 139.7 mm to 320.0 x 457.2 mm Free size: 100.0 x 148.0 mm to 304.8 x 457.2 mm Envelopes: COM10 No.10, Monarch, ISO-C5, DL Envelope custom size: 98.0 x 98.0 mm to 320.0 x 457.2 mm Upper Cassette: Standard size: A4, A5, A5R, A6R, B5 Custom Size: 105.0 x 148.0 mm to 297.0 x 215.9 mm Envelopes: ISO-C5 Lower Cassette: Standard size: A3, A4, A4R, A5, A5R, A6R, B4, B5, B5R Custom Size: 105.0 x 148.0 mm to 304.8 x 457.2 mm Envelopes: COM10 No.10, Monarch, DL * Envelope Attachment A (standard) is required.	Copy Density	Automatic or Manual (9 Levels)
Supported media weights	Multi-purpose tray: 52 to 300 gsm* * SRA3 is unsupported for Coated (257-300gsm) and Heavy (257-300gsm) paper. Upper/Lower Cassette: 52 to 256 gsm Duplex: 52 to 220 gsm	Magnification	Variable zoom: 25% to 400% (1% Increments) Preset reduction/enlargement: 25%, 50%, 70%, 100%(1:1), 141%, 200%, 400%
Warm-up Time	Quick Startup Mode: 4 seconds or less* * Time from device power-on to when the copy icon appears and is enabled to operate on the touch panel display. From Sleep Mode: 10 seconds or Less From Power On: 10 seconds or less* * Time from device power-on, until copy ready (not print reservation)	Copy Features	Preset R/E Ratios by Area, Two-Sided, Density Adjustment, Original Type Selection, Interrupt Mode, Book to Two Pages, Two-sided Original, Job Build, N on 1, Add Cover, Insert Sheets, Different Size Originals, Page Numbering, Copy Set Numbering, Sharpness, Erase Frame, Secure Watermark, Print Date, Gutter, Print & Check, Negative/Positive, Repeat Images, Merge Job Blocks, Mirror Image, Store in Mail Box, Copy ID Card, Skip Blank Pages, Free Size Original, Color Mode, Reserved copy, Copy Sample
Dimensions (W x D x H)	With Platen Cover-Y3: 565 x 692 x 788 mm With Single Pass DADF-C1: 565 x 722 x 897 mm With DADF-BA1: 565 x 719 x 891 mm	SCAN SPECIFICATIONS	
Installation Space (W x D)	Basic: 978 x 1119 mm (with Single Pass DADF-C1 + right cover open + Multi-purpose tray extension extended + paper cassette open) 978 x 1116 mm (with DADF-BA1 + right cover open + Multi-purpose tray extension extended + Paper cassette open) Fully Configured: 1,651 x 1,119 mm (with Single Pass DADF-C1 + Staple Finisher-AE1/Booklet Finisher-AE1 + Copy Tray-T2 extension extended + paper cassette open) 1,651 x 1,116 mm (with DADF-BA1 + Staple Finisher-AE1/Booklet Finisher-AE1 + Copy Tray-T2 extension extended + paper cassette open)	Type	Standard: Color Platen Optional: Platen Cover-Y3, Single Pass DADF-C1* or DADF-BA1 [2-sided to 2-sided (Automatic with DADF)] * Detect Feeder Multi Sheet Feed is supported. DADF: Duplexing Automatic Document Feeder
Weight* *including toner	With Platen Cover-Y3: Approx. 71 kg With DADF-BA1: Approx. 78 kg With Single Pass DADF-C1: Approx. 84 kg	Document Feeder Paper Capacity (80 gsm)	Single Pass DADF-C1: up to 200 Sheets DADF-BA1: up to 100 Sheets
PRINT SPECIFICATIONS		Acceptable Originals and weights	Platen: Sheet, Book, and 3-Dimensional Objects Document Feeder media weight: Single Pass DADF-C1: 1-sided scanning: 38 to 220 gsm (BW, CL) 2-sided scanning: 38 to 220 gsm (BW, CL) *An acceptable weights of A6R or smaller is 50 to 220gsm. DADF-BA1: 1-sided scanning: 38 to 128 gsm (BW), 64 to 128 gsm (CL) 2-sided scanning: 50 to 128 gsm (BW), 64 to 128 gsm (CL)
Print Speed (BW and CL)	iR-ADV DX C3935i: 1-sided: Up to 35 ppm (A4, A5, A5R, A6R), Up to 17 ppm (A3), Up to 23 ppm (A4R) iR-ADV DX C3930i: 1-sided: Up to 30 ppm (A4, A5, A5R, A6R), Up to 15 ppm (A3), Up to 20 ppm (A4R) iR-ADV DX C3926i: 1-sided: Up to 26 ppm (A4, A5, A5R, A6R), Up to 15 ppm (A3), Up to 20 ppm (A4R) iR-ADV DX C3922i: 1-sided: Up to 22 ppm (A4, A5, A5R, A6R), Up to 15 ppm (A3), Up to 20 ppm (A4R)	Supported media sizes	Platen: max. scanning size: 297.0 x 431.8 mm Single Pass DADF-C1: A3, A4, A4R, A5, A5R, A6R, B4, B5, B5R, B6R, Custom size: 69.9 x 139.7 mm to 304.8 x 431.8 mm DADF-BA1: A3, A4, A4R, A5, A5R, B4, B5, B5R, B6, Custom size: 139.7 x 128 mm to 297.0 x 431.8 mm
Print Resolution (dpi)	1,200 x 600, 1,200 x 1,200 (half-speed)	Scan Speed (ipm: BW/CL,A4)	Single Pass DADF-C1: 1-sided Scanning: 135/135 (300 x 300 dpi, send), 80/80 (600 x 600 dpi, copy) 2-sided Scanning: 270/270 (300 x 300 dpi, send), 160/90 (600 x 600 dpi, copy) DADF-BA1: 1-sided Scanning: 70/70 (300 x 300 dpi, send), 51/51 (600 x 600 dpi, copy) 2-sided Scanning: 35/35 (300 x 300 dpi, send), 25.5/25.5 (600 x 600 dpi, copy)



TECHNICAL SPECIFICATIONS

imageRUNNER ADVANCE DX C3900 Series

Scan Resolution (dpi)	Scan for Copy: 600 x 600 Scan for Send: (Push) 600 x 600 (SMB/FTP/WebDAV/IFAX), (Pull) 600 x 600 Scan for Fax: 600 x 600	Network Security	TLS 1.3, IPsec, IEEE802.1X authentication, WPA3 support, SNMP V3.0, Firewall Functionality (IP/MAC Address Filtering), Dual Network Support (Wired LAN/Wireless LAN, Wired LAN/Wired LAN), Disabling Unused Functions (Enabling/Disabling Protocols/Applications, Enabling/Disabling Remote UI, Enabling/Disabling USB Interface), Communication Line Separation (G3 FAX, USB Port, Advanced Space, Scan and Send -Virus Concerns for E-mail Reception)
Pull Scan Specifications	Colour Network ScanGear2. For both TWAIN and WIA Supported OS : Windows*10/11/Server 2012/Server 2012 R2/Server 2016/Server 2019/Server 2022	Device Security	Protecting SSD Data [SSD Data Encryption (FIPS140-2/140-3)*, SSD Lock], Standard SSD Initialize, Trusted Platform Module (TPM 2.0), Job Log Conceal Function, Protecting MFP Software Integrity, Checking MFD Software Integrity & Platform Firmware Resiliency (NIST SP800-193) with Automatic System Recovery (Verify System at Startup, Runtime Intrusion Detection enabled with McAfee Embedded Control), HCD-PP Common Criteria Certification *Validation pending
Scan Method	Push Scan, Pull Scan, Scan to Box, Scan to Advanced Space, Scan to Network, Scan to USB Memory Key, Scan to Mobile device, Scan to cloud (uniFLOW Online - optional)	Device Management and Auditing	Administrator Password, Remote Management Two-factor Authentication, Digital Certificate And Key Management, Audit Log, Cooperating with External Security Audit System (Security Information and Event Management), Image Data Logging, Security Policy Setting
SEND SPECIFICATIONS		ENVIRONMENTAL SPECIFICATIONS	
Destination	Standard: E-mail/Internet FAX (SMTP), SMB 3.1.1, FTP, WebDAV, Mail Box Optional: Super G3 FAX, IP Fax	Operating Environment	Temperature: 10 to 30 °C Humidity: 20 to 80 % RH (Relative Humidity)
Address Book	LDAP (2,000)/Local (1,600)/Speed dial (200)	Power source	220-240V 50/60Hz 5A
Send resolution (dpi)	Push: up to 600 x 600 Pull: up to 600 x 600	Power consumption	Maximum: Approx. 1,500 W Copying (with DADF continuous scan): Approx. 613 W*1 Standby: Approx. 40.7 W*1 Sleep mode: Approx. 0.8 W*2 *1 Reference value: measured one unit *2 0.8 W sleep mode is not available in all circumstances due to certain settings.
Communication protocol	File: FTP (TCP/IP), SMB 3.1.1 (TCP/IP), WebDAV E-mail/I-Fax: SMTP, POP3	Power consumption	Typical Electricity Consumption (TEC)* : iR-ADV DX C3935i: 0.35 kWh iR-ADV DX C3930i: 0.30 kWh iR-ADV DX C3926i: 0.26 kWh iR-ADV DX C3922i: 0.23 kWh *As per USA Energy Star 3.0
File Format	Standard: TIFF, JPEG, PDF(Compact, Searchable, Apply policy, Optimize for Web, PDF/A-1b, Trace & Smooth, Encrypted, Device Signature, User Signature), XPS(Compact, Searchable, Device Signature, User Signature), Office Open XML (PowerPoint, Word)	Noise levels	For detailed information relating to Erp:Lot6/26 regulation, please go to: https://www.canon-europe.com/for_work/lot26/ Sound Power Level (LWA,m)* Active (BW)(I-sided) iR-ADV DX C3935i: 64 dB, Kv 3 dB iR-ADV DX C3930i: 60 dB, Kv 3 dB iR-ADV DX C3926i: 60 dB, Kv 3 dB iR-ADV DX C3922i: 60 dB, Kv 3 dB *Reference value: measured only one unit with ISO7779, described with ISO9296 (2017)
Universal Send Features	Original Type Selection, Two-sided Original, Book to Two Pages, Different-size Originals, Density Adjustment, Sharpness, Copy Ratio, Erase Frame, Job Build, Delayed Send, Preview, Job Done Notice, File Name, Subject/Message, Reply-to, E-mail Priority, TX Report, Original Content Orientation, Skip Blank Originals	Standards	Blue Angel
FAX SPECIFICATIONS		CONSUMABLES	
Maximum Number of Connection Lines	2	Toner Cartridges	C-EXV 64 Toner BK/C/M/Y
Modem Speed	Super G3: 33.6 kbps G3: 14.4 kbps	Toner Yield (Estimated @5% Coverage)	C-EXV 64 Toner BK: 38,000 pages C-EXV 64 Toner C/M/Y: 25,500 pages
Compression Method	MH, MR, MMR, JBIG	SOFTWARE AND PRINTER MANAGEMENT	
Resolution (dpi)	400 x 400 (Ultra Fine), 200 x 400 (Super Fine), 200 x 200 (Fine), 200 x 100 (Normal)	Tracking and reporting	Universal Login Manager (ULM) uniFLOW Online Express* *For more information, please refer to: uniFLOW Online Express uniFLOW Online
Sending and Receiving Size	Sending: A3, A4, A4R, A5*1, A5R*1, B4, B5*2, B5R*1 Receiving: A3, B4, A4, A4R, A5R , B5, B5R *1 Sent as A4 *2 Sent as B4 short	Remote management tools	iWEMC eMaintenance Content Delivery System
FAX memory	Up to 30,000 pages (2,000 jobs)	Scanning software	Color Network ScanGear 2
Speed dials	Max. 200	Optimisation tools	Canon Driver Configuration Tool
Group dials/destinations	Max. 199 dials	Platform	MEAP (Multifunctional Embedded Application Platform)
Sequential broadcast	Max. 256 addresses	Document Publishing	Kofax Power PDF Advanced (optional)
Memory backup	Yes	PAPER SUPPLY OPTIONS	
Fax Features	Sender's Name (TTI), Selecting the Telephone Line (when sending fax), Direct Send, Delayed Send, Preview, Job Done Notice, TX Report, Interrupt Transmission, Sequential Broadcasting, Password/Subaddress Sending, Confidential Mailbox, 2 on 1 Log	Cassette Feeding Unit-AWI	Paper Capacity: 550 sheets x 2 (1,100 sheets) (80 gsm) Paper Type: Thin, Plain, Recycled, Color, Heavy, Bond, Transparency, Pre-punched, Letterhead Paper Size: A3, A4, A4R, A5, A5R, A6R, B4, B5, B5R, Custom Size: 105.0 x 148.0 mm to 304.8 x 457.2 mm Paper Weight: 52 to 256 gsm Power Source: From the Main Unit Dimensions (W x D x H): 565 x 635 x 248 mm Weight: Approx. 16.0 kg
STORE SPECIFICATIONS			
Box (Number supported)	100 User Inboxes, 1 Memory RX Inbox, 50 Confidential Fax Inboxes Maximum 10,000 Pages (2,000 jobs) Stored		
Advanced Space	Communication Protocol: SMB or WebDAV Supported Client PC: Windows* 10/11 Concurrent Connections (Max.): SMB:64, WebDAV:3		
Advanced Space available disc space	Standard:16 GB (With option: max. 480GB)		
Advanced Space Features:	Authentication for Advanced Space Log-in, Sort Function, Printing a PDF File with a Password, imageWARE Secure Audit Manager Support, Search, File Preview, Authentication Management, Open to public, URI TX, Backup/Restore		
SECURITY SPECIFICATIONS			
Authentication and Access Control	User Authentication (Picture Login, Picture and PIN Login, Card Login*, Username and Password Login, Function Level Login, Mobile Login), Department ID Authentication (Department ID and PIN Login, Function Level Login), uniFLOW Online Express (PIN Login, Picture Login, Picture and PIN Login, Card Login, Card and PIN Login, Username and Password Login, Department ID and PIN Login, Function Level Login), Access Management System (Access Control) *Card readers are optional, please refer to Hardware Accessories Activation is required		
Document Security	Print Security (Secure Print, Encrypted Secure Print, Forced Hold Printing, uniFLOW Secure Print**), Receive Data Security (Confidential Fax Inbox Forwarding Received Documents Automatically), Scan Security (Encrypted PDF, Device Signature PDF/XPS, User Signature PDF/XPS, Adobe LiveCycle® Rights Management ES2.5 Integration), BOX Security (Mail Box Password Protected, Advanced Space Access Control), Send Data Security (Setting for requesting password input per transmission, Restricted E-mail/File send functions, Confirming FAX number, Allow/Restrict Fax Driver Transmissions, Allow/Restrict Sending from History, S/MIME Support), Document Tracking (Secure Watermark) ** Requires uniFLOW Online/uniFLOW		



TECHNICAL SPECIFICATIONS

imageRUNNER ADVANCE DX C3900 Series

OUTPUT OPTIONS*

Inner 2way Tray-M1

*Paper capacity may vary with different paper type/size.

Tray Capacity (with 80 gsm paper)
Upper tray: A4, A5, A5R, A6R, B5, B5R: 85 sheets
SRA3, A3, A4R, B4: 40 sheets
Lower tray (standard tray): A4, A5, A5R, A6R, B5, B5R:
up to 220 sheets
SRA3, A3, A4R, B4: up to 100 sheets
Paper Weight: 52 to 300 gsm
Dimensions (W x D x H): 428 x 405 x 88 mm
Weight: 0.7 kg

Copy Tray-T1

Capacity (with 80gsm paper):
A4, A5R, B5, B5R: 100 sheets
A3, A4R, B4: 65 sheets
Dimensions (W x D x H): 442 x 373 x 176 mm (attached to the main unit, when the extension tray is extended)
Weight: 0.5 kg

Inner Finisher-L1

Tray Capacity (with 80gsm paper):
Upper Tray: SRA3, A3, A4, A4R, A5, A5R, A6R, B4, B5, B5R: approx. 45 sheets
Lower Tray: A4, A5, A5R, B5: approx. 500 sheets
SRA3, A3, A4R, B4, B5R: 250 sheets
A6R: 30 sheets
Envelope: 10 sheets
Paper Weight: 52 to 300 gsm
Staple Position: Corner, Double
Staple Capacity:
A4, B5: 50 sheets (52 to 90 gsm)
A4R: 40 sheets (52 to 90 gsm)
A3, B4: 30 sheets (52 to 90 gsm)
Eco Staple:
A3, A4, B4, B5: 10 sheets (52 to 64 gsm)
8 sheets (65 to 81.4 gsm)
6 sheets (82 to 105 gsm)
Staple On Demand: approx. 40 sheets (80 gsm)
Dimensions (W x D x H): 727 x 525 x 225 mm (attached to the main unit, when the extension tray is extended)
Weight: Approx. 9.1 kg

Staple Finisher-AE1

Tray Capacity (with 80gsm paper):
Upper Tray: A4, A5, A5R, A6R, B5: approx. 250 sheets
SRA3, A3, A4R, B4, B5R: approx. 125 sheets
Lower Tray: A4, A5, A5R, B5: 3,000 sheets
SRA3, A3, A4R, B4, B5R: 1,500 sheets
A6R: 250 sheets
Envelope: Monarch 30 sheets, COM10 No.10, DL, ISO-C5: 100 sheets
Paper Weight:
Upper Tray: 52 to 256 gsm
Lower Tray: 52 to 300 gsm
Staple Position: Corner, Double
Staple Capacity: A4, B5: 50 sheets (52 to 90 gsm)
A4R: 40 sheets (52 to 90 gsm)
A3, B4: 30 sheets (52 to 90 gsm)
Eco Staple:
A3, A4: 10 sheets (52 to 64 gsm)
8 sheets (65 to 81.4 gsm)
6 sheets (82 to 105 gsm)
Staple On Demand: 50 sheets (52 to 90 gsm)
Dimensions (W x D x H): 637 x 623 x 1,021 mm (when the extension tray is extended)
Weight: Approx. 30.0 kg

Booklet Finisher-AE1

(Includes the above Staple Finisher-AE1 basic staple specifications.)
Saddle Stitch paper size: A3, A4R, B4
Saddle Stitch Staple Capacity: 20 sheets x 10 sets (52 to 81.4 gsm) (including 1 cover sheet up to 256 gsm)
Non Staple Folded Bunch Capacity: up to 3 sheets (52 to 105 gsm)
Power supply: From main unit
Dimensions (W x D x H): 637 x 623 x 1,021 mm (when the extension tray is extended)
Weight: Approx. 53.0 kg

Inner 2/4 Hole Puncher-D1

(Requires Inner Finisher-L1)
Two or Four Holes
Acceptable Punch Paper Weight: 52 to 300 gsm
Acceptable Punch Paper Size:
Two holes A3, A4, A4R, A5, B4, B5, B5R,
Four holes A3, A4

Inner 4 Hole Puncher-D1

(Requires Inner Finisher-L1)
Four Holes
Acceptable Punch Paper Weight: 52 to 300 gsm
Acceptable Punch Paper Size:
Four holes A3, A4, A4R, A5, B4, B5, B5R

2/4 Hole Puncher Unit-A1

(Requires either the Staple Finisher-AE1 or Booklet Finisher-AE1)
Two or Four Holes
Acceptable Punch Paper Weight: 52 to 300 gsm
Acceptable Punch Paper Size:
Two holes A3, A4, A4R, A5, B4, B5, B5R,
Four holes A3, A4

4 Hole Puncher Unit-A1

(Requires either the Staple Finisher-AE1 or Booklet Finisher-AE1)
Four Holes
Acceptable Punch Paper Weight: 52 to 300 gsm
Acceptable Punch Paper Size:
Four holes A3, A4, A4R, A5, B4, B5, B5R

HARDWARE ACCESSORIES

Card Readers

Copy Card Reader-F1
Copy Card Reader Attachment-B7
IC Card Reader Box for Numeric Keypad-A1

Others

Single Pass DADF-C1
DADF-BA1
Platen Cover-Y3
Utility Tray-B1
Numeric Keypad-A2
Instant Stapler-B1 (optional)
Media Adjustment Kit-A1

SECURITY OPTIONS

Data Security

1TB SSD-A1
Memory Mirroring Kit-A1
250GB SSD-A1 (usage with Memory Mirroring Kit-A1)

SYSTEM AND CONTROLLER OPTIONS

Print Accessories

PCL International Font Set-A

Barcode Printing

Barcode Printing Kit-D1

System Accessories

Copy Control Interface Kit-A1
Serial Interface Kit-K3
Wireless LAN Board-F1

Fax Accessories

Super G3 FAX Board-BH1
Super G3 2nd Line Fax Board-BH2
Remote Fax Kit-A1
IP FAX Expansion Kit-B1

OTHER OPTIONS

Accessibility Accessories

ADF Access Handle-A1
Voice Guidance Kit-G1
Voice Operation Kit-D1

Staple Cartridges

Staple Cartridge-Y1 (2 x 2,000pcs)*
* For Booklet Finisher only
Staple-P1 (2 x 5,000pcs)

Device Protection

Antimicrobial Film* - Various Sheets designed to fit the devices most common touch points.
*Application by a Service engineer is recommended

Software & Solutions



Certifications and compatibility



Canon Ireland

3006 Lake Drive
Citywest, Saggart
Co. Dublin, Ireland
Telephone No: 01 2052400
Facsimile No: 01 2052525
canon.ie

Canon (UK) Ltd

The Bower
4 Roundwood Avenue
Stockley Park
Uxbridge
UB11 1AF

Canon Inc. canon.com

Canon Europe
canon-europe.com

English edition
© Canon Europa N.V., 2023

