



# Xerox® Colour C60/C70 Printer

Amazing flexibility and the power to do more.



## Productivity, scalability and professional image quality, all-in-one.

The Xerox® Colour C60/C70 Printer provides application versatility and professional image quality, and is flexible enough to grow with your business. It's an all-in-one solution that can boost productivity in any environment.

### Xerox® Colour C60/C70 Printer Quick Facts

- **Speed:** Up to 60/70 ppm colour and 65/75 ppm black and white
- **Single-pass Scanner:** Up to 200 images per minute (ipm)
- **Resolution:** 2400 x 2400 dpi
- **Toner:** Xerox® Emulsion Aggregation (EA) Toner with ultra-low melt technology
- **Media Weights (Maximum):** Up to 300 gsm and up to 220 gsm for auto duplexing
- **Media Sizes:** Up to SRA3+ / 330 x 488 mm

### A flexible and affordable solution from the start.

Your teams want the flexibility and productive workflow of a multifunction device. Your graphics, creative and production teams want a higher level of quality and finishing. The Xerox® Colour C60/C70 Printer offers the best of all worlds.

The Xerox® Colour C60/C70 allows you to print, copy, fax (optional), and scan – including scan and print with PC, USB or email. It can even print from virtually any smart phone or tablet. That's how the Xerox® Colour C60/C70 boosts any team's efficiency.

### Capture new business and keep high-value colour printing in-house.

- Print at up to 60/70 pages per minute colour and up to 65/75 pages per minute black and white. And with easy set-up and automated workflows, you can handle quick turnarounds in style.

- Media versatility – both coated and uncoated stocks up to 300 gsm.
- Inline finishing options offer a professional polish with stapling, hole-punching, folding and face trimming for presentations, brochures and reports.
- A choice of print servers allows you to boost colour management and streamline labour-intensive processes.
- Variable data capabilities let you capitalise on personalised applications for direct mail.

### Exceed expectations.

The Xerox® Colour C60/C70 Printer is engineered to bring out the best in digital printing. Whether you need to create a customer brochure, a captivating proposal or presentation, an eye-catching poster, or even window stickers or polyester signs, you get stunning results every time.



# Promote your image and stand out from the crowd.

Benchmark image quality that you expect. Results that truly delight.

## Innovation comes standard.

- **Vibrant colour and incredible detail.** With our 2400 x 2400 dpi resolution, images are rich with crisp text so your output will always impress.
- **Excellent image quality.** Our Xerox® Emulsion Aggregation (EA) Low Melt Toner technology is chemically grown, so the small, consistent particles produce great quality with smooth transitions and an offset-like finish.
- **Keep jobs moving.** All printers have components that eventually wear out, but with Xerox® Smart Kit® Customer Replaceable Units, you can keep moving without a service call. Simple slide-in and slide-out replacement units keeps you up and running. Smart Kits include drum rolls, fuser, charge corotron assembly and waste toner bottle.

## It's your image. Unleash your creativity.

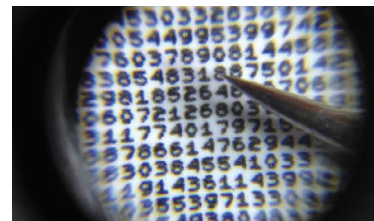
- **Match company colours, logos and offset presses.** The Xerox® Colour C60/C70 Printer offers licensed PANTONE® matching for spot colours to the PANTONE MATCHING SYSTEM®, PANTONE GOE™ and PANTONE PLUS.

It's also certified by Fogra and IDEAlliance Digital Press to GRACoL® specifications, so you can be confident that you can consistently reproduce accurate colour.

- **True Adobe® PostScript® 3™ certification and the latest Adobe PDF Print Engine (APPE)<sup>1</sup>.** These features plus high speeds means your creativity is never restricted.

## Total control, when you need it most.

- **Simple Image Quality Adjustment (SIQA).** Use this toolkit for quick adjustment of registration.
- **Customise your settings.** Custom paper setup lets you create, store, and retrieve unique paper profiles that can be used whenever you need them.



**Xerox® Colour C60/C70 Printer:**  
0.6 point font Xerox® MicroFont  
pictured with a pin.

We've combined class-leading print resolution (2400 x 2400 dpi) and the unique properties of Xerox® EA Toner with ultra-low melt technology. The result is stunning detail and an offset-like finish and vibrant colour. This also allows for outstanding performance on new substrates such as Xerox® NeverTear, digital synthetics, polyesters and more.



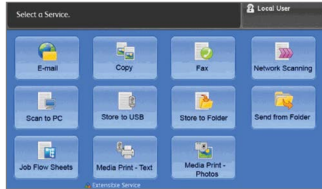
<sup>1</sup>Depending on Print Server / Controller selected.

# Print servers to fit every workflow.

We offer a choice of print servers, so you're sure to find one that fits.

## Xerox® Integrated Servers

Count on superior colour and high-end workflows.



### Xerox® Integrated Colour C60/C70 Print Server

Standard with every Xerox C60/C70 and an ideal controller for today's office applications, you will be delighted with the unrivalled simplicity and value, including an intuitive, easy to use touch screen. Learn more at [www.xerox.com/C70IntegratedColourServer](http://www.xerox.com/C70IntegratedColourServer).

### Xerox® EX-i C60/C70 Print Server Powered by Fiery®

World-class colour and workflow tools that put you in command. Learn more at [www.xerox.com/C70EXiFieryColourServer](http://www.xerox.com/C70EXiFieryColourServer).

### Xerox® FreeFlow Print Server Integrated for the Xerox® Colour C60/C70 Printer

All the advantages of Xerox Production workflows – delivered in a compact, value oriented package. Learn more at [www.xerox.com/C70FreeflowPrintServer](http://www.xerox.com/C70FreeflowPrintServer).

## Xerox® External Server

Powerful server with colour tools, workflow capabilities, and high speed, all at your fingertips. The ultimate in control and consistency.



### Xerox® EX C60/C70 Print Server Powered by Fiery®

Fiery technology increases your profits by delivering high-impact documents with vibrant images and colour that exceed your customers' expectations. Learn more at [www.xerox.com/C70EXPrintServer](http://www.xerox.com/C70EXPrintServer).

Before



Transparency Handling

After



Before



Spot Colour Callouts

After



The Adobe PDF Print Engine – or APPE – is the gold standard in PDF processing, producing PDF files that flow through your shop with a minimum of intervention. No more transparency problems. No more colour matching challenges. Instead, you will see faster turnarounds, more accurate results – and more returning customers.

# Whatever the size and scope of your work, we'll fit your needs.

## Feeding Options



- 1 High-Capacity Feeder:** Adds 2,000 sheets of A4 (up to 200 gsm).



- 2 One Tray Oversize High-Capacity Feeder:** Adds 2,000 sheets in sizes up to 330 x 488 mm and weights up to 300 gsm. Storage Cabinet included.



- 3 Two Tray Oversize High-Capacity Feeder:** Adds 4,000 sheets in sizes up to 330 x 488 mm and weights up to 300 gsm.

## Finishing Options



- 4 Offset Catch Tray or Simple Catch Tray:** 500 sheet stacking.
- 5 BR Finisher<sup>1</sup>:** Gives you advanced finishing function at a great value – offsetting, hole punch, staple (1,2,4 staple) plus stacking 3,000 sheets and available C Fold / Z Fold Unit.
- 6 BR Booklet Maker Finisher<sup>1</sup>:** Provides all the advanced finishing of the BR Finisher with additional booklet making capabilities.
- 7 Convenience Stapler:** Staple up to 50 sheets of 90 gsm media.



- 8 GBC® AdvancedPunch™<sup>2</sup>:** Lets you create professionally bound documents in-house by combining printing, punching and collating into one convenient step.
- 9 Light-Production Finishers<sup>3</sup>:** These versatile finishing options enable coated booklets, brochures and bi-fold mailers as well as stacking, stapling and hole punching. They also include an interposer input tray. Choose from a Light Production Finisher, Light Production Finisher with Booklet Maker or a Light Production Finisher with Booklet Maker and Folder.
- 10 Xerox® SquareFold® Trimmer Module<sup>2</sup>:** Enhances the power of the Light Production Finisher with booklet maker with square fold of cover sheets and face trimming to produce booklets.

<sup>1</sup> Requires Vertical Transport Kit

<sup>2</sup> Requires Interface Module and Light Production Finisher

<sup>3</sup> Requires Interface Module

## Finishing Applications



Sort and Collate



Staple



Hole Punch



Booklet



V Fold



Z Fold



Tri-Fold/C Fold



A3 Z Fold



Face Trim



Square Fold

# Transform – and work simpler, smarter.

**When work gets simpler, people are more productive.** The Xerox® Colour C60/C70 Printer simplifies the process of capturing, editing and storing documents – all the tools you need to get quality work done more efficiently.

## Capture productivity.

- **True multitasking.** Scan, print, copy, fax (optional) or route files, all at once. Preview scans and fax images on-screen and avoid mistakes.
- **Save time and steps.** The Xerox® Colour C60/C70 offers superior scanning and allows you to send the files anywhere. Email lists, store on-board, send to a PC, server, USB or fax. Create a searchable PDF in one simple step.

## Extend your possibilities and transform the way you get work done with the power of Xerox® Workflow Solutions.

- **Xerox® ConnectKey® for SharePoint® or Xerox® ConnectKey® for DocuShare®.** Scan files directly into Microsoft® SharePoint or Xerox® DocuShare® and other Windows® folders. Plus, you can go beyond basic file storage and PDF creation by automatically converting documents to intelligent, structured data with easy file naming and routing tools.

- **Make it personal with XMPie®.** With variable data printing software from industry-leader XMPie, you can expand into high-value variable applications – with low-cost and with ease.
- **Xerox® Scan to PC Desktop®.** Bridge the gap between Microsoft® Office® documents, PDFs and paper. Scan to PC Desktop allows you to customise scanning menus on your Xerox® Colour C60/C70 directly from your desktop. Learn more at [www.xerox.com/scantopcdesktop](http://www.xerox.com/scantopcdesktop).
- **Xerox® Mobile Print Solution.** Xerox has all the options to enable secure, accurate printing from any Apple® iOS®, Android™ and BlackBerry® mobile devices. Learn more at [www.xerox.com/mobileprint](http://www.xerox.com/mobileprint).

## Secure and confident.

- **Full system Common Criteria (ISO 15408) Certification at EAL3** (undergoing evaluation). This ensures the Xerox® Colour C60/C70 Printer conforms to the most stringent security standards.
- **Secure Print.** Keep documents private by holding print jobs in the queue until the user enters the password.

- **Password protected PDFs.** This features requires a password to open and view a sensitive scan.
- **Standard 256-bit and FIPS 140-2 encryption.** The gold standard in keeping your data secure – Image Overwrite. Automatically erases images on the device.

## Control and track costs easily.

- **Xerox® Standard Accounting.** This software is a standard feature that resides locally on the device. It provides superior accounting features that lets you track, analyse and limit device usage. It lets you know where your costs are coming from so you can take control of them.
- **Xerox Secure Access Unified ID System®.** Integrates with your existing employee ID badge solution, allowing users to unlock access to system features via badge proximity or swiping (optional). Learn more at [www.xerox.com/secureaccess](http://www.xerox.com/secureaccess).



# Create exciting new applications – easily finished inline.

## The printing world is exploding with new applications and new ways to use colour, media and finishing.

The superb image quality, robust media latitude, flexible finishing options, modularity and server options of the Xerox® Colour C60/C70 Printer, integrated with enterprise workflows, make it the perfect device for capturing new business, keeping more applications in-house.

### Grab their attention.

The Xerox Colour C60/C70 allows you to think big. Print signs, ID Cards, Window Clings, Labels and Polyester Synthetics. Add impact to your special events with vivid, full colour, high image quality signage and Point of Sale materials.

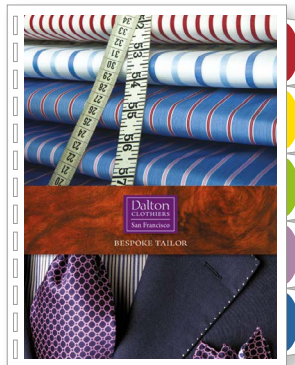
Our special polyester EA Low Melt Toner fuses the output to polyester using a proprietary chemical bonding methodology, ensuring superior image quality on specialty substrates including polyester and more. Our EA Toner including Premium NeverTear is water, oil, grease and tear resistant.



Xerox® NeverTear Window Signs

### Production printing with enterprise workflows at an affordable price.

Image quality, ease of use, productivity, media latitude, feeding and finishing options, plus world-class workflow solutions are at your fingertips. Grow your digital colour printing capabilities and reduce costs with the Xerox® Colour C60/C70 Printer.



- **Brochures** – easily create professional, colourful brochures with productivity-boosting inline folding and square fold trimming.
- **Presentations / Newsletters** – inline stapling and hole punching makes producing presentations and newsletters quick and easy.
- **Manuals and Reports** – inserted tabs keep annual reports and financial reports organised, while stapling and GBC AdvancedPunch hole-punching keep pages secure.
- **Posters** – expanded media range lets you run eye-catching posters on sturdy coated media – up to SRA3+.
- **Specialty Media and Photo Specialty applications** – impeccable colour and photo-finish image quality will keep customers coming to you for all today's latest photo applications

# Xerox® Colour C60/C70 Printer

## Resolution

- Print / Copy: 2400 x 2400 dpi; Scan: 200 x 200, 300 x 300, 400 x 400, 600 x 600
- Line Screens: 600, 300, 200 and 150 Clustered Dot, 200 Rotated Line Screen<sup>1</sup>

## Technology

- Print, Fax (Optional), Copy, Scan, Preview, Email
- Load-while-run toner and paper capability
- Advanced Registration Technology for tighter control
- Simple Image Quality Adjustment (SIQA)
- Front to Back Registration +/- 1.2 mm
- Custom paper set-up / alignment profiles
- Xerox® EA Low Melt Toner
- Xerox® Smart Kit® replaceable units for toners, drums, fuser, charge corotron, waste bottle, staples

## Graphic Arts Credentials

- Fogra certified, IDEAlliance Digital Press System certified, PANTONE Matching System®, PANTONE GOE, PANTONE Plus, Adobe PDF Print Engine<sup>1</sup>

## Integrated Scanner

- Single-pass Duplex Automatic Document Feeder
- Colour scanner
- Scan to a variety of output options
- 250-sheet capacity
- Up to 200 ipm (Colour and Black and White)
- Originals up to A3 in weights from 38 gsm to 200 gsm

## Productivity / Print Speeds

- Duty Cycle<sup>2</sup>: 300,000
- AMPV<sup>3</sup>: 10,000 to 60,000 pages per month<sup>3</sup>

### Xerox® Colour C60/C70 Colour Print Speeds

- A4
  - 60/70 ppm (64-105 gsm) uncoated
  - 43/50 ppm (106-176 gsm) uncoated, (106-150 gsm) coated
  - 30/35 ppm (177-300 gsm) uncoated, (151-300 gsm) coated
- A3
  - 30/35 ppm (64-105 gsm) uncoated
  - 21/25 ppm (106-176 gsm) uncoated, (106-150 gsm) coated
  - 14/17 ppm (177-300 gsm) uncoated, (151-300 gsm) coated
- SRA3
  - 27/30 ppm (64-105 gsm) uncoated
  - 19/19 ppm (106-176 gsm) uncoated, (106-150 gsm) coated
  - 12/12 ppm (177-300 gsm) uncoated, (151-300 gsm) coated

### Xerox® Colour C60/C70 Black and White Print Speeds

- A4
  - 65/75 ppm (64-176 gsm) uncoated
  - 43/50 ppm (177-300 gsm) uncoated, face-up (106-176 gsm) coated
  - 30/35 ppm (177-300 gsm) coated
- A3
  - 33/37 ppm (64-176 gsm) uncoated, face-up
  - 21/25 ppm (177-300 gsm) uncoated, (106-176 gsm) coated
  - 14/17 ppm (177-300 gsm) coated
- SRA3
  - 29/33 ppm (64-176 gsm) uncoated
  - 19/19 ppm (177-300 gsm) uncoated, face-up (106-176 gsm) coated
  - 12/12 ppm (177-300 gsm) coated

## Paper

### Flexibility / Weights

- Internal Trays 64-220 gsm coated and 256 gsm uncoated

- Tray 1: 500 sheets SRA3, Tray 2: 500 sheets A3, Tray 3: 870 sheets A4, Tray 4: 1,140 sheets A4
- Bypass 250-sheet up to 300 gsm uncoated and coated, up to 330 x 482 mm
- Optional 2,000-sheet HCF and OHCF (One Tray or Two Tray)

### Capacity and Handling (A4)

- 3,260 sheets standard via four internal trays and bypass tray
- Maximum paper capacity: 7,260 sheets via standard trays and two Oversize High Capacity Feeders (optional)
- Two-sided printing:
  - 176 gsm auto duplex for all stocks
  - 220 gsm auto duplex for most stocks
  - 300 gsm manual duplex for all stocks from bypass trays and optional Oversize High Capacity Feeder

## Feeding and Finishing Options

### High-Capacity Feeder (HCF)

- A4 (2,000 sheets up to 220 gsm)

### One Tray or Two Tray Oversize High-Capacity Feeder (OHCF)

- 64-300 gsm uncoated, 106-300 gsm coated
- 1 Tray OHCF: 182 x 250 mm (B5) to 330 x 488 mm (SRA3); 2 Tray OHCF: 102 x 152 mm to 330 x 488 mm (SRA3)
- One or two tray module: 2,000 sheets / 4,000 sheets
- Envelope and Small Media support included with 2 Tray OHCF

### Offset Catch Tray or Simple Catch Tray

- 500-sheet stacking

### Vertical Transport Kit

- Required for both the BR Finisher and BR Booklet Maker Finisher. Connects the paper exit of the device to the finishers.

### BR Finisher

- 3,000-sheet stacker, 500-sheet top tray
- Offsetting
- 2/4 hole
- Staple 50 sheets (Front, Rear, Dual, Four position)
- C Fold / Z Fold Unit (Optional module)

### BR Booklet Maker Finisher

- 1,500-sheet stacker, 500-sheet top tray
- Offsetting
- 2/4 hole
- Staple 50 sheets (Front, Rear, Dual, Four position)
- Saddle-stitch booklet making
- V-Folding
- C Fold / Z Fold Unit (Optional module)
- Bi-fold, saddle stitch booklet maker up to 15 uncoated sheets, 7 sheets at 106-176 gsm coated, 5 sheets at 177-220 gsm coated

### Interface Module

- Required for Light Production Finishers. Provides built-in decurling for coated/heavy weight media.

### Light Production Finisher

- 500 sheet top tray, 3,000 sheet stacker tray
- Multi-position hole punching and stapling, quad/4 staples
- Stapling, up to 100 sheets
- 200 sheet interposer for preprinted and full bleed sheets

### Light Production Finisher with Booklet Maker – includes all features of the Light Production Finisher plus:

- Bi-fold or saddle-stitch booklet up to 25 sheets (100 imposed pages of 75 gsm media)

### Light Production Finisher with Booklet Maker and Folder – includes all the features of Light Production Finisher & Booklet Maker plus:

- Folding Module for A3/Z-fold, A4/Tri-fold & Z-fold.

### GBC AdvancedPunch™<sup>4</sup>

- Punch configurations available in A4
- Various interchangeable die sets available

### Xerox® SquareFold® Trimmer Module<sup>4</sup>

- Square fold up to 25 sheets
- Face trim between 2-20 mm in 0.1 mm increments
- Paper weights 64-300 gsm coated and uncoated

### Convenience Stapler

- Staple up to 50 sheets of 90 gsm media

## Xerox® Integrated Colour C60/C70 Print Server (DMP) (Standard)

### Hardware Specifications (equal or better)

- 320 GB Hard Disk Drive, 4 GB RAM
- 10.4 in. colour, touch screen flat-panel display
- Ethernet interface (10 MBTX / sec, 100 MBTX / sec, 1000 MBTX / sec option)

### Client Environments Supported

- Windows® XP SP1 & above (32 & 64 bit), Server 2003/2008 (32 & 64 bit), Vista (32 & 64 bit), Windows 7 (32 & 64 bit), Mac OS® 10.4 and above, Citrix, Custom driver for Unix: AIX® 5 v5.3, HP-UX® 11.0/11i v2, Solaris® 8/9/10, Linux Fedora Core® 1/5, Red Hat ES4, SUSE 10/11
- Citrix, WHQL certification<sup>1</sup>

### PDLs and Data Formats

- PDF, XPS®, PCL® 6 emulation, HP-GL2 (direct submission), TIFF, JPEG, Adobe® PostScript® 3™ (optional)

### Scan

- Scan to Email, Scan to Folder, to PC, to Mailbox (private and public), Scan to USB, FTP, SMB, Desk, Text searchable PDF, PDF/A, XPS, Thumbnail Preview

### Security

- Standard Secure Print, Authentication with LDAP/Kerberos/SMB/CAC, Password Protected PDF, FIPS 140-2 encryption, S/MIME Encrypted Email, IPsec, 802.1X, SNMP v3.0, Email over SSL, Image Overwrite (Immediate, Scheduled, On Demand) Hard Disk Data Encryption, Audit Log Optional CAC, Xerox Secure Access Unified ID System®, IPv6 Ready, 256 Bit Encryption, Common Criteria Certified (undergoing evaluation)

### Other Options

- Common Access Card Enablement Kit, Accounting Options, Xerox Extensible Interface Platform® Enabled, Foreign Device Interface
- Mobile / Smartphone Print

## Additional Print Server Options

- Xerox® EX-i C60/C70 Print Server Powered by Fiery®
- Xerox® FreeFlow Print Server Integrated for the Xerox® Colour C60/C70 Printer
- Xerox® EX C60/C70 Print Server Powered by Fiery®

## Electrical Requirements

- Printer: 220-240 VAC, 50/60 Hz
- Optional Feeding / Finishing:
  - Each module requires 220-240 VAC, 50/60 Hz, 10A power

## Printer Dimensions

- Height: 1,391.5 mm
- Width: 1,574 mm
- Depth: 787 mm

<sup>1</sup> Depending on Print Server / Controller selected

<sup>2</sup> Duty Cycle – Maximum volume capacity expected in any one month. Not expected to be sustained on a regular basis.

<sup>3</sup> Average Monthly Print Volume – Expected regular monthly throughput

<sup>4</sup> Requires Interface Module and Light Production Finisher

For more detailed specifications, go to [www.xerox.com/C60-C70Specs](http://www.xerox.com/C60-C70Specs).

To view a product video, visit [www.xerox.com](http://www.xerox.com). Build and configure your own

Xerox® Colour C60/C70 Printer at [www.buildyourownxerox.com](http://www.buildyourownxerox.com).

